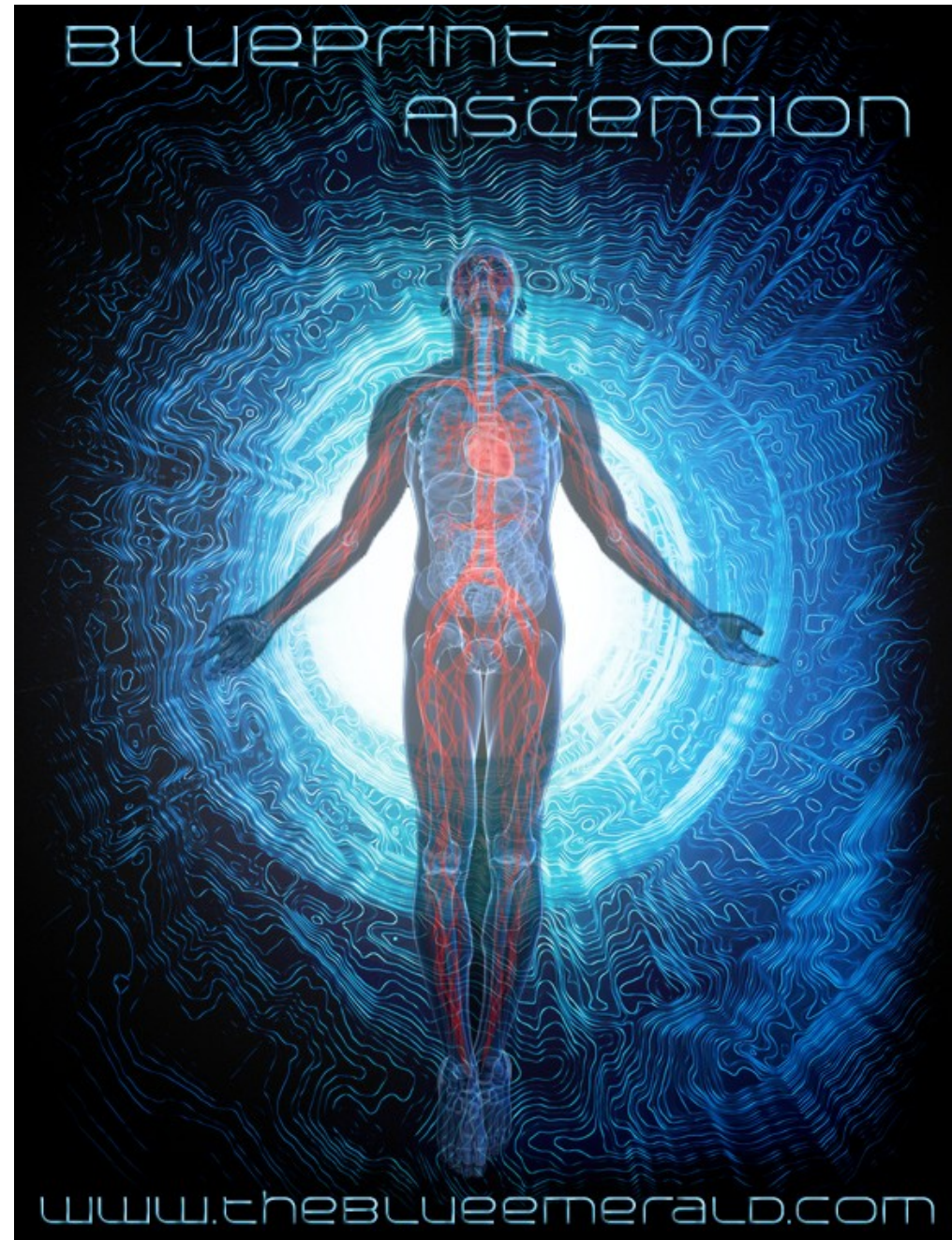
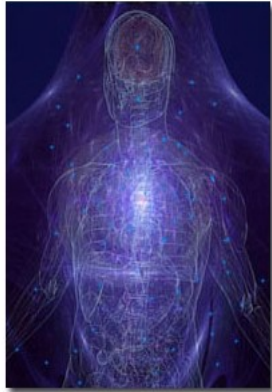


Go have a look, seriously. You're going to want to know this stuff. It's not about something that is going to happen to you. This is something you are going to do, or your are not going to do, and it's just a decision: www.theblueemerald.com

Ascension!

www.theblueemerald.com





What is Ascension? Simply put, it is a biotechnological ability to merge your consciousness with that of your metabeing, thereby going "out of phase" with this perceptual plane of being, thus "graduating" from Classroom Earth to a higher order of being. Throughout time it has never been anything more nor less than that, apart from the ritualistic-ceremonial embellishments peculiar to the times and places, and was always accomplished by those who knew how to do it using a variety of methods and/or

techniques, a plan, and executing that plan. The various groups that knew how to do this might surprise you, and how they did it would be considered highly technological for their times, such as using alchemy and geometry in some form or other to create fields that are doorways to alternate planes of being.

The Blue Emerald is a book of knowledge that exists concurrently here and in Atlantis, and in its visible (in the mind) aspect looks like a large internally illuminated sapphire. Through it and from other sources we are being given the scientific, technological approach to the coming Ascension in 2012 of 12,000 persons, which is in fact the total number of people who will achieve this in this particular critical portal. Of crucial importance, the single most important element to it all, is to understand that this isn't something that is just going to happen to you, or the planet, or whatever. You will not make any sort of Ascension (as it is broadly and mostly misunderstood) unless you yourself know precisely how you're going to do it. This Ascension, like all those which came before, will take place because you have a practical, practicable plan, and a straightforward execution of that plan.

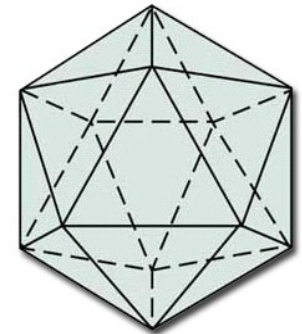
If you do, more power to you, and perhaps you'd care to team up with us and show us what you got. If you don't, why not team up with us to continue receiving (remembering) the blueprint for it, as a few of us have done this six times before. Like every other endeavor there is, it requires desire, comprehension, knowingness and method. Your comprehension

is tied directly to your capacity for acceptance of what is possible. We're stretching those boundaries, but we're doing it in a practical, straightforward, understable way.

The Ascension Blueprint we're being given is based on a type of equation:

$$20/12 T = 20/12 G \times 12,000 P = 144,000 L$$

The "T" is Time, and is 2012. The "G" is Gravity (the geometric grid of Gaia), and is an icosahedron (20 faces and 12 vertices). Since time and gravity (geometry) are represented by the same number, 2012, this is the clue that those two differing concepts will merge into the same thing for the 12,000 human pieces of the equation, and which the Ascension document explains in detail. The "P" is the number of Players, and "L" is the lightspeed



harmonic of the icosahedral main grid as those to phase out come into sympathetic resonance, or coherence, with its vertices (nodal points) and with each other. The lightspeed harmonic is the frequency nexus-point we will achieve when we as frequency components to that grid are ready and all the conditions come together for the Perfect Storm, and then we'll simply phase-out of this plane through a full conscious merger with our metabeing, becoming metaconsciousness. After that, when called upon, we will create carbon 7 (instead of carbon 12, which is what we are as humans now) bodies as less dense "physical forms" to continue interacting with this plane as it moves towards the fifth Golden Age.

If you're ready to see what we've come up with so far, please go to www.theblueemerald.com and look under the Ascension tab. The clear, detailed, explanations are all there. It's a fun read, and has HUGE codes and energy flowing from within and beneath the words themselves. If you're sensitive to energy, you'll feel this for yourself as it will begin changing you immediately.